

## Skeletal System Review

Use these terms to fill in the definitions below:

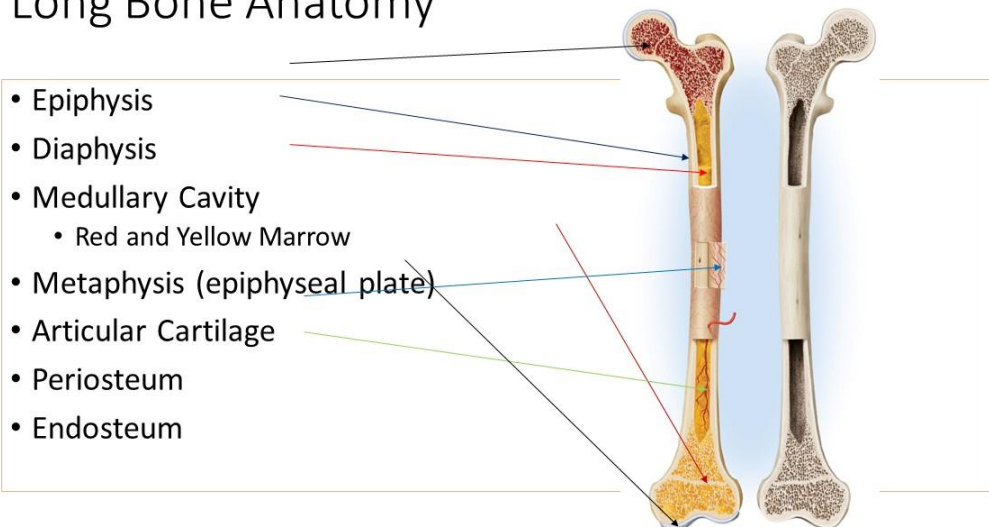
Ossification  
Periosteum  
Trabeculae  
Articular cartilage  
Diaphysis  
Epiphysis  
Medullary cavity

1. cavity inside a bone with bone marrow: Medullary Cavity
2. ends of a long bone: Epiphysis
3. spongy bone is made of: Trabeculae
4. process of bone formation: Ossification
5. shaft of middle portion of a long bone: Diaphysis
6. double layered membrane surrounding outside of bone: Periosteum
7. located at the ends of the epiphysis: Articular Cartilage

In the space below or on the back:

1. Draw and label the structures of a long bone that are listed above.

### Long Bone Anatomy



2. Draw and label the structures of an osteon (central canal, perforating canal, lamellae, lacunae, canaliculi).

