

Histology Lab

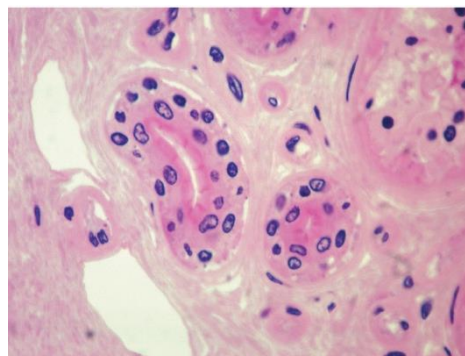
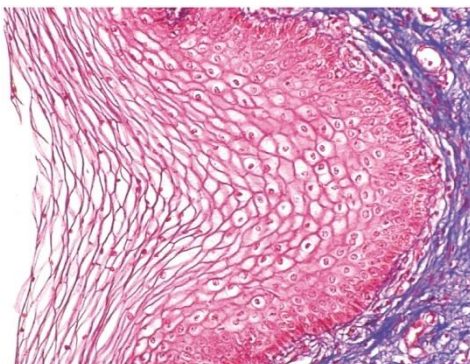
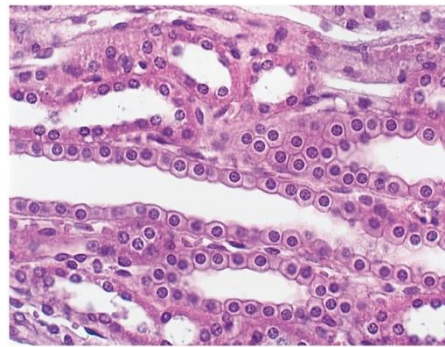
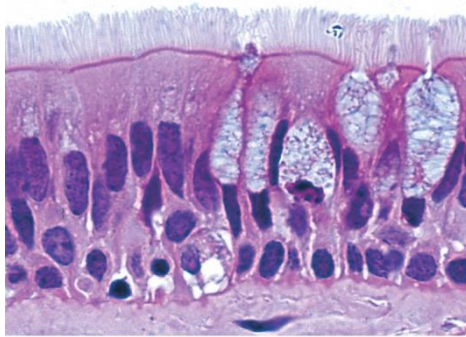
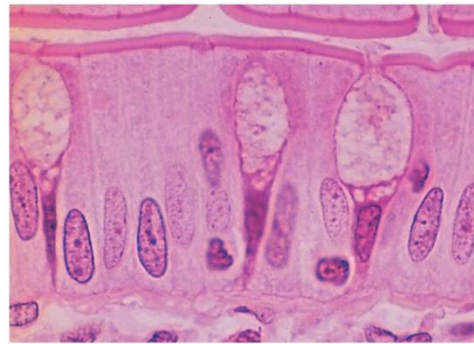
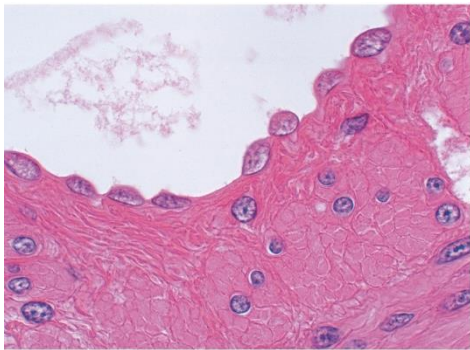
In this lab students will learn to identify the four main types of tissue and their subtypes. Use your textbook to identify and label the cell structures listed below. Watch the video on the Anatomy and Physiology website that is associated with this lab.

Activity One: Epithelial Tissue

Please identify and label the following types of epithelial tissue listed below. Use your textbook to help you complete this activity, types of epithelial tissue can be found on Table 5.2 & 5.3 (pages 146-149).

- ___ Simple squamous
- ___ Stratified squamous
- ___ Simple cuboidal

- ___ Stratified cuboidal
- ___ Simple columnar
- ___ Pseudostratified columnar

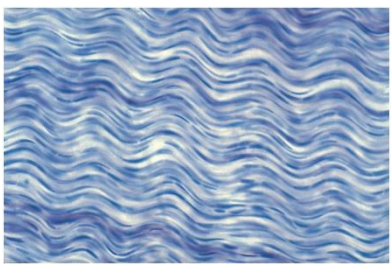
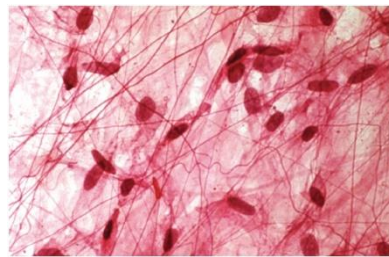
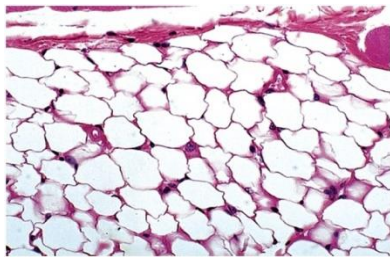
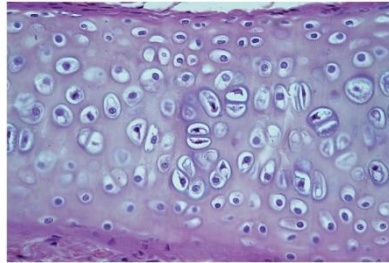
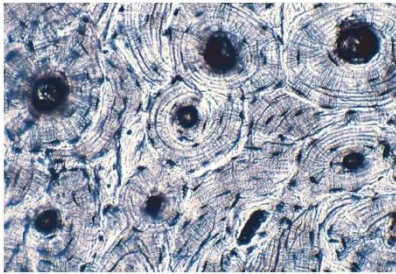
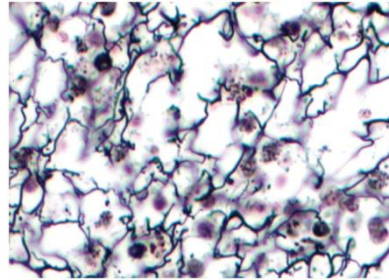
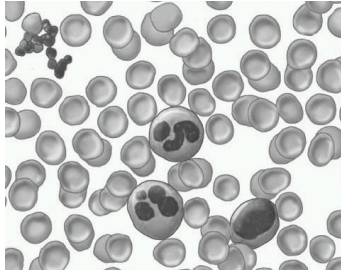


Activity Two: Connective Tissue

Please identify and label the following types of connective tissue listed below. Use your textbook to help you complete this activity, types of connective tissue can be found on Table 5.4 – 5.9 (pages 153-159).

- ___ Areolar
- ___ Reticular
- ___ Adipose
- ___ Dense

- ___ Cartilage
- ___ Blood
- ___ Bone



Activity Three: Nervous and Muscular Tissue

Please identify and label the following types of nervous and muscular tissue listed below. Use your textbook to complete this activity, types of nervous and muscular tissue can be found on Table 5.10 & 5.11 (pages 160 & 162).

Muscular Tissue

- Skeletal
- Smooth
- Cardiac

Nervous tissue

