

## Female Reproductive Lab

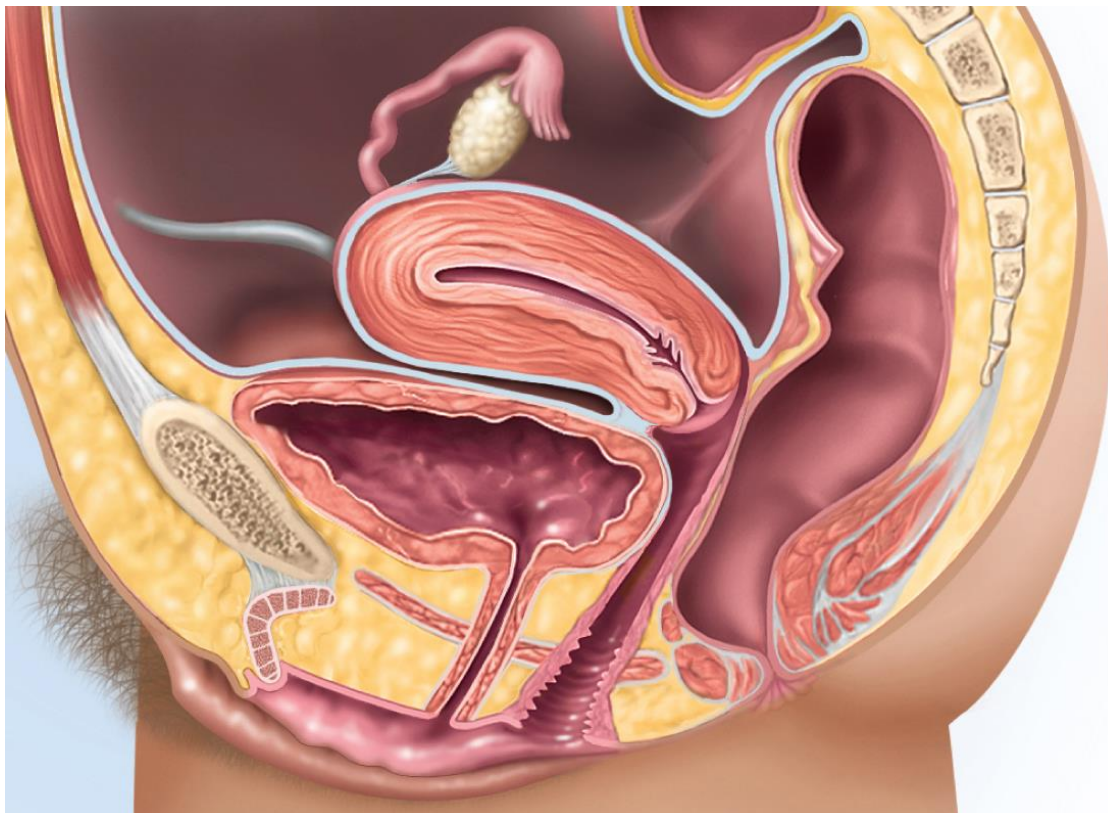
In this lab students will learn to identify structures of the female reproductive anatomy. Use your textbook to identify and label the structures of the female reproductive system listed below.

Watch the video that is associated with this lab. **\*Only the terms provided in the lab PDF will receive credit on lab quizzes and exams.**

### Activity One: Female Reproductive Anatomy

Please identify and label the following female reproductive structures listed below. Use your textbook to complete this activity, the female reproductive anatomy can be found on Figure 28.1 (page 1060).

- Ovaries
- Ovarian ligament
- Uterine tubes (also known as Fallopian tubes and oviducts)
  - Fimbriae
- Uterus
  - Cervix
- Vagina
- Vulva
  - Labia majus
  - Labia minus
  - Clitoris
- Urinary bladder
- Urethra



## Activity Two: Female Reproductive Anatomy (Model)

Please identify and label the following structures of the female reproductive system (same as above) on the models below. Watch the Female Reproductive Lab Video to help you complete this activity.

- Ovaries
- Ovarian ligament
- Uterine tubes (also known as Fallopian tubes and oviducts)
  - Fimbriae
- Uterus
  - Cervix
- Vagina
- Vulva
  - Labia majus
  - Labia minus
  - Clitoris
- Urinary bladder
- Urethra

