

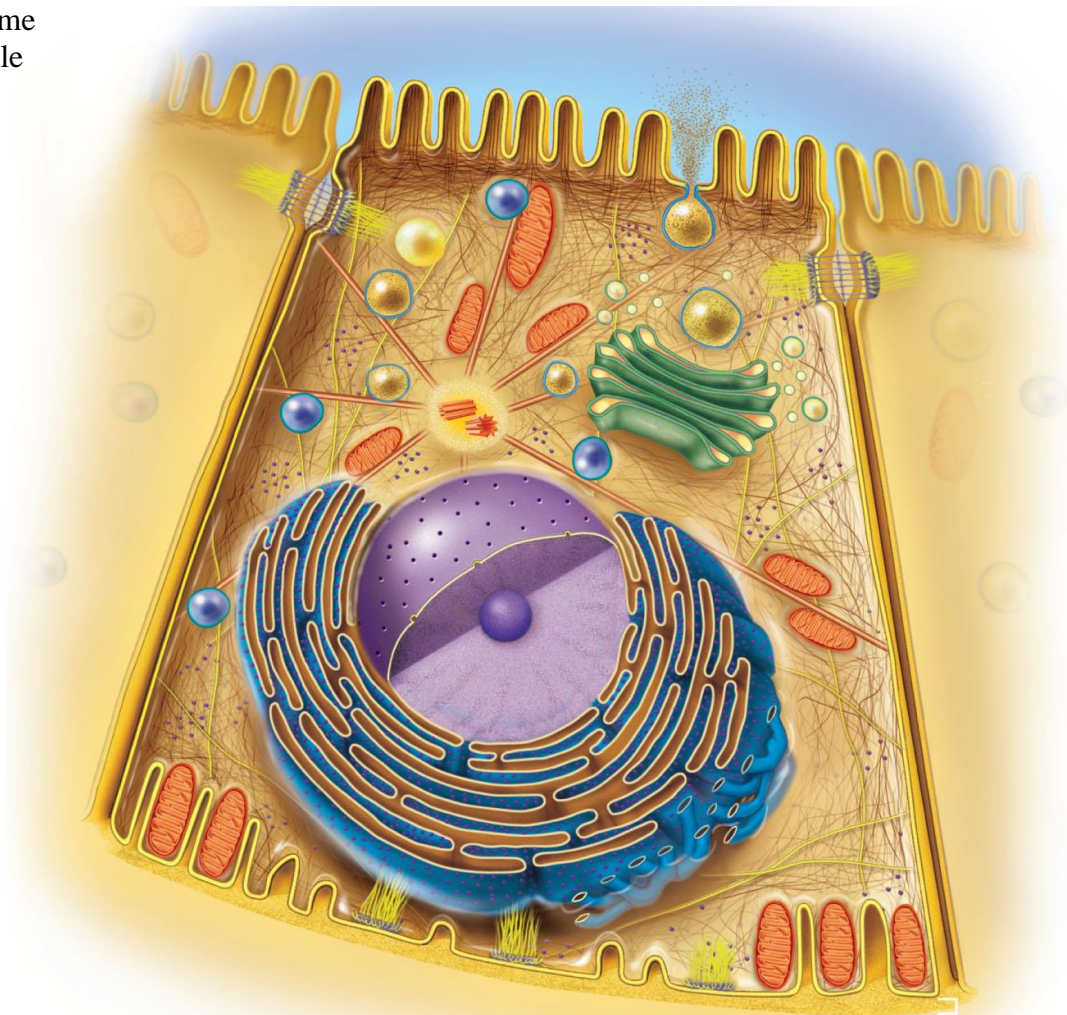
## Cytology Lab

In this lab students will learn to identify main external and internal cell structures. Use your textbook to identify and label the cell structures listed below. Watch the video that is associated with this lab. **\*Only the terms provided in the lab PDF will receive credit on lab quizzes and exams.**

### Activity One: Structure of a Representative Cell

Please identify and label the following cell structures listed below. Use your textbook to complete this activity, cell structures can be found on Figure 3.5 (page 82).

- \_\_\_ Plasma membrane
- \_\_\_ Cytosol (described in text)
- \_\_\_ Nucleus
- \_\_\_ Nuclear envelope
- \_\_\_ Rough endoplasmic reticulum
- \_\_\_ Smooth endoplasmic reticulum
- \_\_\_ Golgi complex
- \_\_\_ Golgi vesicles
- \_\_\_ Mitochondria
- \_\_\_ Lysosome
- \_\_\_ Centriole



## Activity Two: The Cell Interior

Please identify and label the following cell structures listed below. Watch the Cytology Lab Video to help you complete this activity.

- \_\_\_ Plasma membrane
- \_\_\_ Nucleus
- \_\_\_ Nuclear envelope
- \_\_\_ Rough endoplasmic reticulum
- \_\_\_ Smooth endoplasmic reticulum
- \_\_\_ Golgi complex
- \_\_\_ Golgi vesicles
- \_\_\_ Mitochondria
- \_\_\_ Lysosome
- \_\_\_ Centriole

\*There may be multiple pictures of the same structure

