



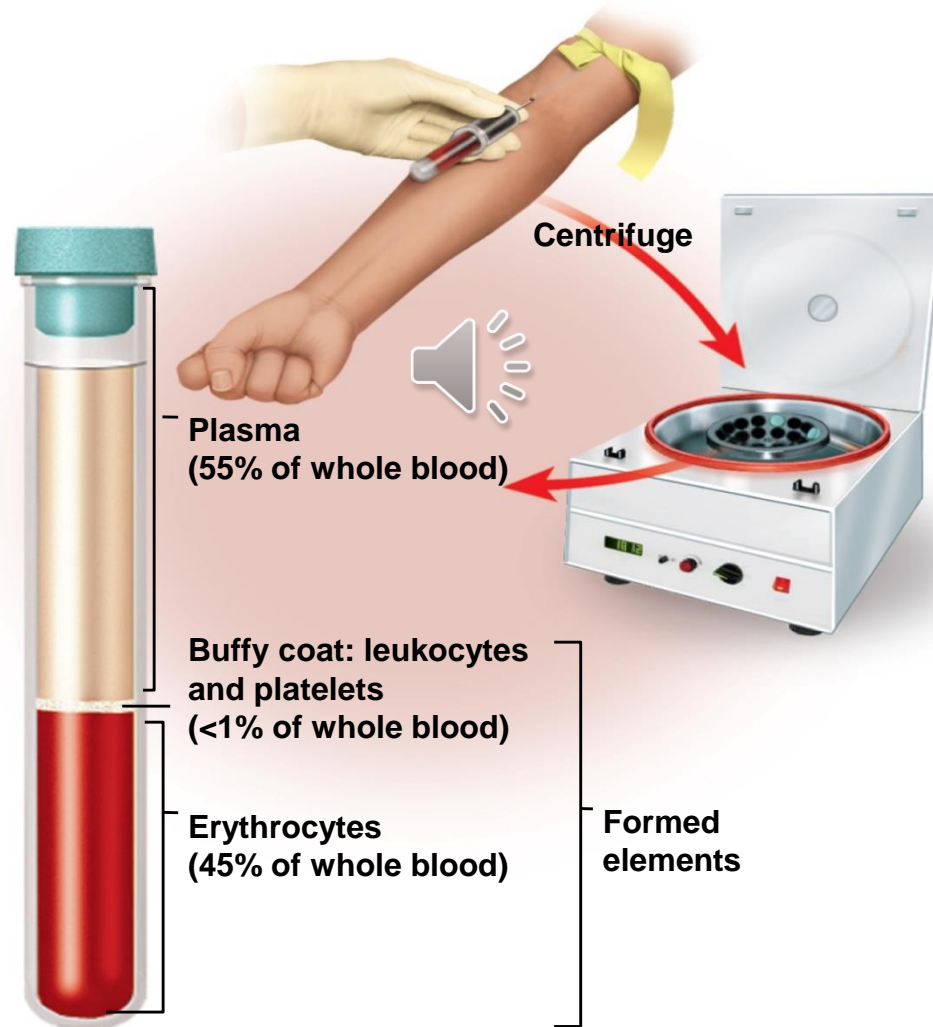
ST. CATHERINE  
UNIVERSITY

Blood

# Functions

- Transport
- Protection
- Regulation of fluid volume and pH

# Components of Blood and Relative Concentrations

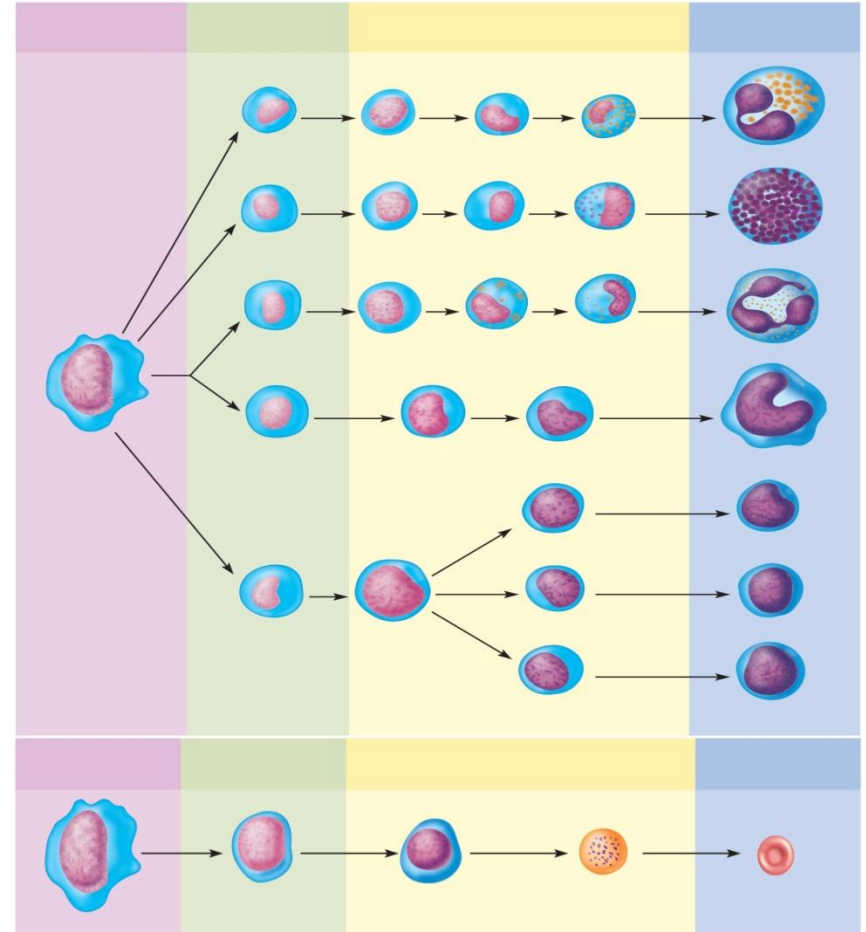


# Plasma

- Composition:
  - Proteins
    - Fibrinogen
    - Albumin
    - Globulins
  - Non-Proteins
    - Water
    - Other Components

# Formed Elements and Production

- Hemopoiesis
- Red Bone Marrow
- Lymphatic System
- Pluripotent Stem Cells
  - Colony Forming Unit

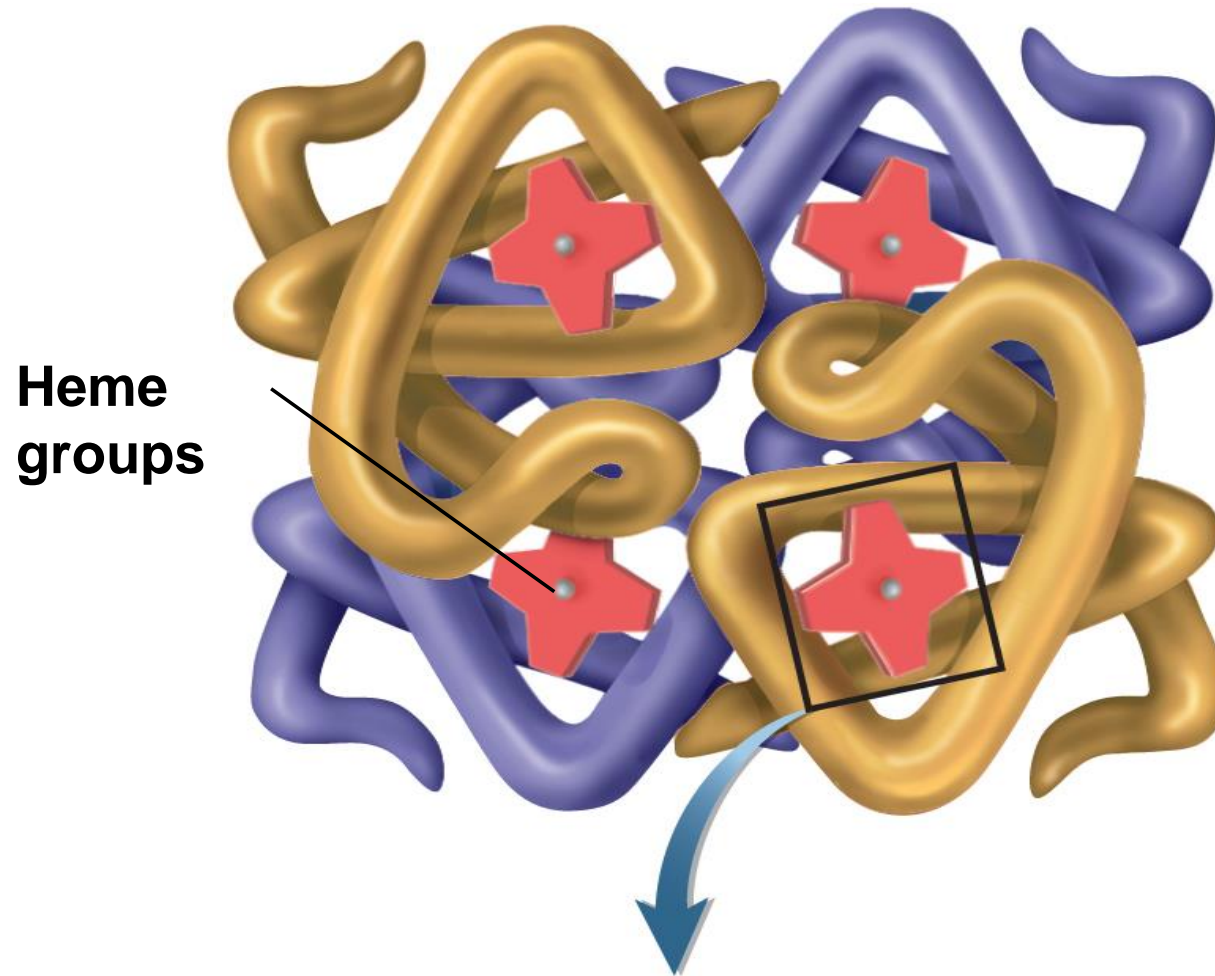


# Erythrocytes (RBCs)

- General Features
- Functions
- Hemoglobin
  - Heme group
  - Globin group
  - Total Oxygen



# Hemoglobin



# RBC Death and Disposal



- 120 day life cycle
- Breaks up in liver and spleen



# Leukocytes (WBCs)

- General Features
- Granulocytes
  - Neutrophils
  - Eosinophils
  - Basophils
- Agranulocytes
  - Lymphocytes
  - Monocytes

# Thrombocytes (Platelets)

A decorative graphic in the top right corner of the slide, featuring several stylized platelets. Each platelet is represented by a circle with a cross inside, and they are arranged in a fan-like pattern, suggesting movement or aggregation.

- General Features
- Functions
  - Hemostasis

# Formed Elements

